

Reception

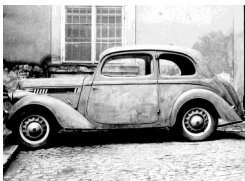


Spring 2018

Phonics and Literacy

This term we will continue to learn sounds that are made of 2 or 3 letters put together e.g. oo, er, air.

Family Phonics will be re-introduced and the children will meet Tricky Trevor who will teach them some "Tricky Words".



We will be writing captions about vehicles, labelling bicycles and creating fact files about tractors and cars. We will also be sequencing stories and writing descriptive sentences about imaginary train journeys.

Mathematical Development

We will continue our maths journey by focussing on reading, writing and ordering numbers to 15 and then to 20. Through whole class and group activities, the children will begin to learn about addition and subtraction. They will also think about how to tell the time.

We will be learning about money so we know how to pay for a bus ticket and we will be finding out about the shapes used in making different vehicles.

Finally, we will be measuring cars and car parts using non standard measures.



If you have any questions, skills or ideas that would help us, please pop in for a chat.

Thank you,
Miss Barkley

Our Core Values

 **COLLABORATIVE**

 **RESPECTFUL**

 **ENTHUSIASTIC**

 **CURIOUS**

 **INDEPENDENT**

On The Go

We will be finding out about things that move and how they do it!

We will be: investigating how cars, trains and fire engines have changed over time; pretending to be mechanics and make cars.; thinking about how to stay safe by the roads, near trains and on our bikes and scooters.

Physical Development

Fine motor skills

Outside team games and skills

PSED/C&L

Friendship

Feeling Proud

Recognising worries

Keeping Safe

Vehicles

Emergency Services



Understanding the World

Labelling a bike

Tractor timelines

Toy car investigations

Road safety and emergency services

Trains around the world

Expressive Art & Design

Sketching bikes

Design a safe helmet

Construct a vehicle

Painting emergency vehicles

Role play going on a journey

Chinese New Year lanterns